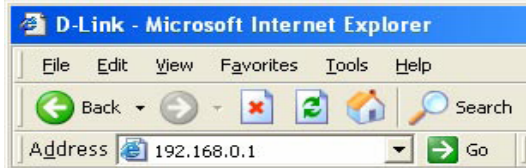


## Setting Up WPA Security on a D-link Router

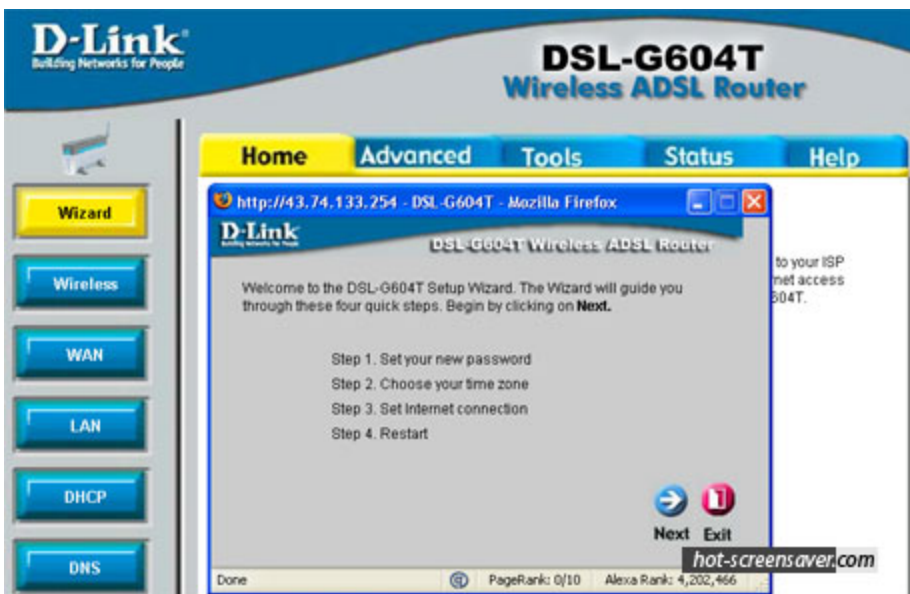
1) In your browser, type "192.168.0.1" (you do not need to type in anything else such as "http://" or "www"). Then press the "Enter" key.



2) Login to your router  
default username: admin  
default password: blank



3) Select wireless in the column on the left



#### 4) Setting WPA/WPA2

Next to Security Mode, select **Enable WPA-Personal**

Next to Cipher Mode, select **TKIP**

Next to PSK/EAP, select **PSK**.

Next to Passphrase, enter a key (passphrase). The key is an alpha-numeric password between 8 and 63 characters long. The password can include symbols (!?\*&\_) and spaces. Make sure you enter this key exactly the same on all other wireless clients.

Enter the passphrase again next to Confirmed Passphrase.

Click **Save Settings** to save your settings.

